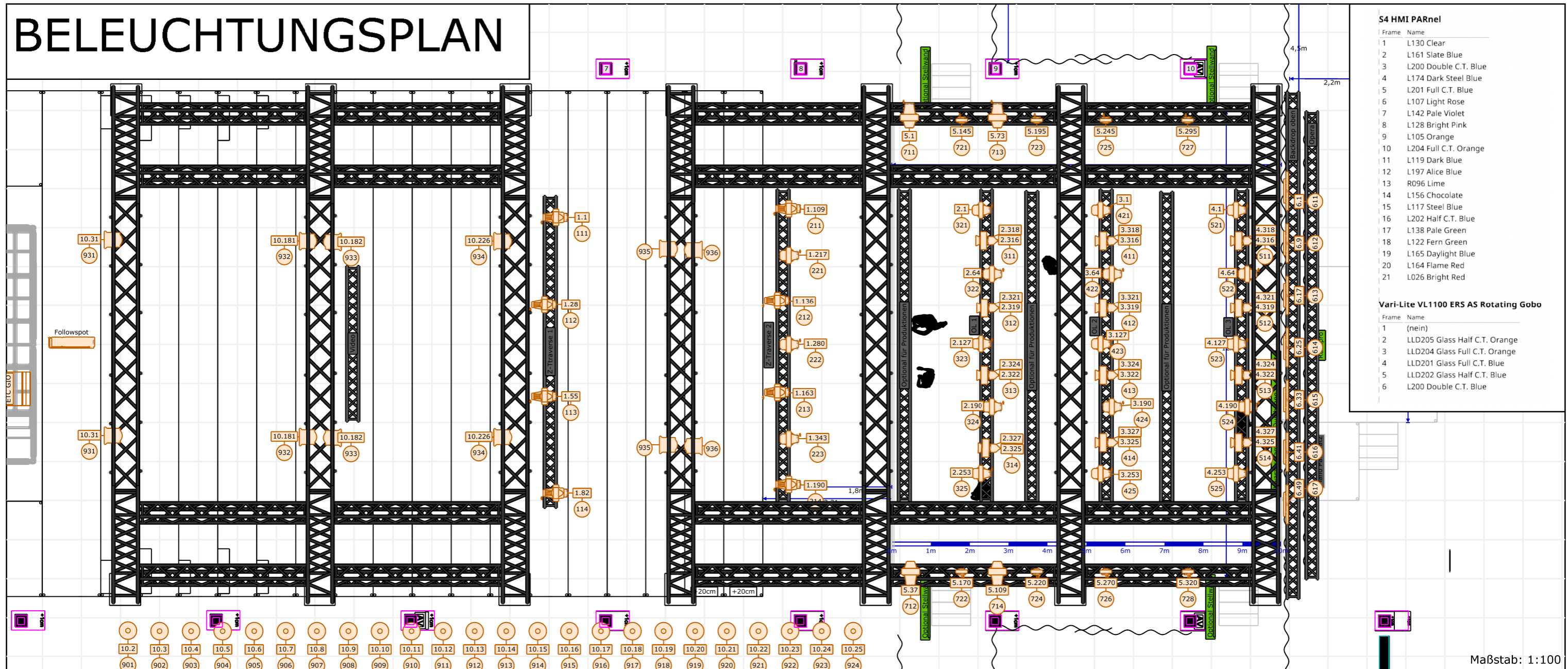


BELEUCHTUNGSPLAN



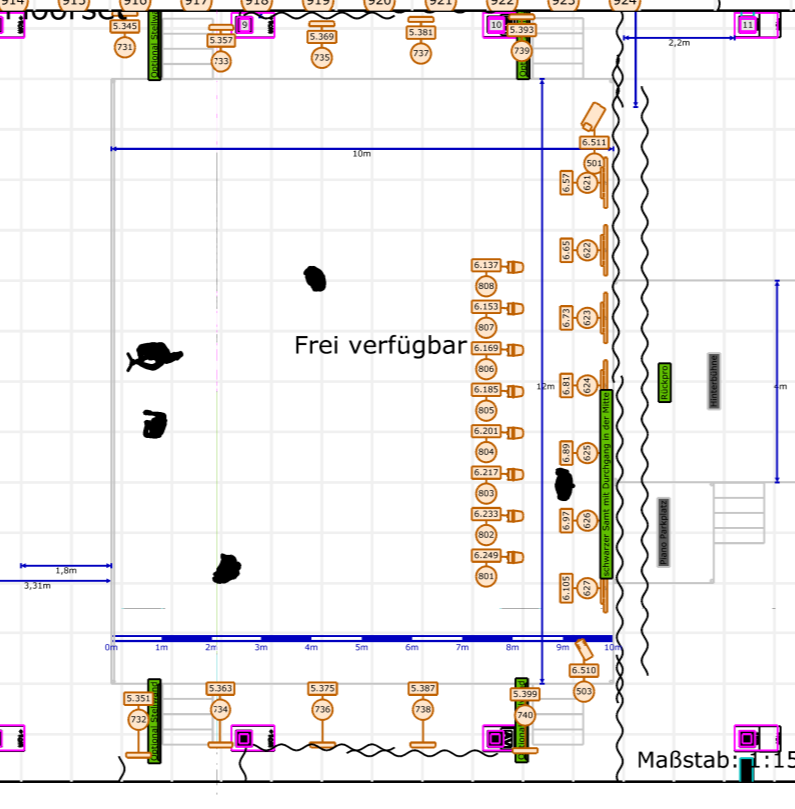
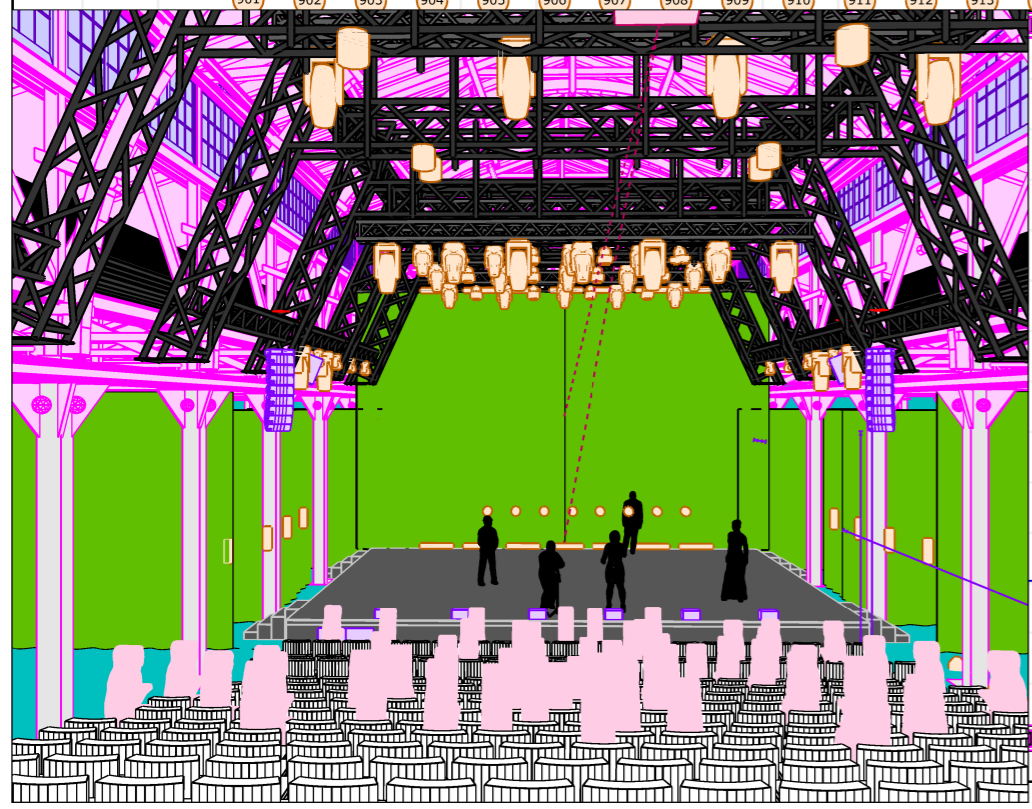
S4 HMI PARNel

Frame	Name
1	L130 Clear
2	L161 Slate Blue
3	L200 Double C.T. Blue
4	L174 Dark Steel Blue
5	L201 Full C.T. Blue
6	L107 Light Rose
7	L142 Pale Violet
8	L128 Bright Pink
9	L105 Orange
10	L204 Full C.T. Orange
11	L119 Dark Blue
12	L197 Alice Blue
13	R096 Lime
14	L156 Chocolate
15	L117 Steel Blue
16	L202 Half C.T. Blue
17	L138 Pale Green
18	L122 Fern Green
19	L165 Daylight Blue
20	L164 Flame Red
21	L026 Bright Red

Vari-Lite VL1100 ERS AS Rotating Gobo

Frame	Name
1	(nein)
2	LLD205 Glass Half C.T. Orange
3	LLD204 Glass Full C.T. Orange
4	LLD201 Glass Full C.T. Blue
5	LLD202 Glass Half C.T. Blue
6	L200 Double C.T. Blue

Maßstab: 1:100



Legende

- Saallicht Halle (24)
- P12 Profile HP (Mode2 - 63Ch) (18)
- SL eStrip 10 (RGBW 16B 1 Pixel 8Ch) (14)
- Saallicht Tribüne (12)
- 8" PRO auf PARNels (Mode0 1Ch.) (12)
- Source Four PARNel HMI mit Jalousie (16bit) und Farbwechsler
- ColorSource Linear 1 (Direct Mode-6ch) (10)
- MAC Aura XB (RAW Extended -25Ch) (8)
- VL1100 ERS AS (16Bit enhanced -27ch) (8)
- SL Par 150 Zoom (RGBW 16B 16Ch) (8)
- SolaWash 2000 High CRI (Standart -36Ch) (4)
- Followspot (1)
- Unique 2.1 (1)
- Viper 2.6 (1)

Projekt Name	Wettbewerb der Schauspielstudierenden
Standort	Bockenheimer Depot Frankfurt
Autor	Philip Deblitz

